

OUTDOOR SPACE:

- # 105 - 111: TERRACE
- # 205 - 211: DECK
- # 305 - 311: DECK
- # 405 - 407, 410 - 411: DECK

CEILING:

- # 105 - 111: Approx. 9 ft.
- # 205 - 211: Approx. 9 ft.
- # 305 - 311: Approx. 9 ft.
- # 405 - 407, 410 - 411: Vaulting to 12 ft.

FEATURES:

Full height, European-style acoustical windows and doors for lake, mountain, and territorial views

200± square foot terrace at 1st floor suites; 60± square foot deck with privacy partition at 2nd through 4th floor suites

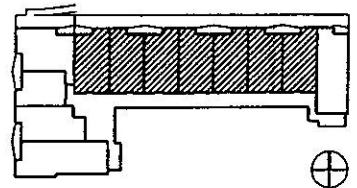
Hardwood bamboo floors throughout living spaces and carpeted bedrooms

Gas fireplace

Air conditioning with forced air furnace

Full suite of appliances including washer/dryer, dishwasher, electric range, microwave, and refrigerator

Two color and finish schemes to choose from, with upgrade finish package available



<h1>CHELAN RESORT SUITES</h1>	<p>CHELAN RESORT SUITES</p> <p>SUITE TYPE A</p> <p>2 BEDROOM / 2 BATHROOM</p> <p>939 GSF 884± NSF</p>	
	<p>2220 W. Woodin Avenue, Chelan, Washington</p>	